

# **Aery Digital Tablet Device Manual**

**2021/08/20**

# Table Of Contents

<b>Usage Guide</b> .....	3
1. Using Digital Pen.....	3
2. Pressure Sensitivity.....	5
<b>Setup Guide</b> .....	6
1. Digital Tablet Device.....	6
2. Using Digital Tablet Device Right Away.....	7
3. Installing Driver Software.....	7
4. Verifying Driver Software installation.....	7
<b>Configuration Guide</b> .....	8
1. Tablet Configuration Panel.....	8
2. Handwriting Left handed user & settings export.....	9
3. Monitor Mapping.....	11
4. Configuring Pen Buttons.....	14
5. Adjusting Work Area.....	15
6. Configuring Hot Cells.....	18
7. Configuring Handy Keys (Only for PF8616, PF1061, PW106).....	23
8. Configuring Roller (Only for PF8616, PF1061, PW106).....	28
9. Configuring Pressure Sensitivity.....	29
<b>Chart 1 Compatible Devices</b> .....	31

## Overview

The Digital Pen Device, with a pressure sensitive digital pen, is suitable for applications such as handwriting/scripting, signature, drawing, and so on, and enables the user to control a personal computer in place of a mouse or other pointing device.

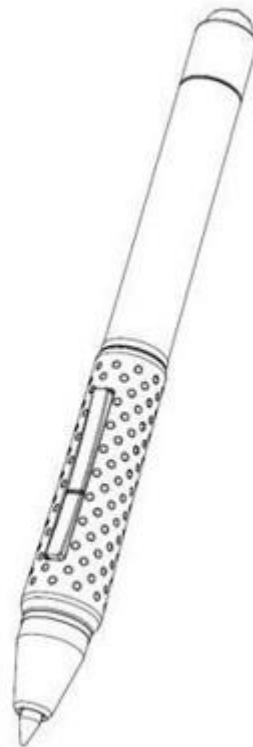
The features of this Digital Pen Device include:

1. Mouse functions – Digital Pen can replace a mouse in controlling the cursor on a computer screen and scrolling, with definable button functions.
2. Ergonomics – Using a pen is completely natural and can reduce the possibilities of RSI (Repetitive Strain Syndrome) such as Carpal Tunnel.
3. Handwriting– Digital Pen enables the handwriting functions provided by operating systems such as Windows Vista, Windows 7, and applications such as Office 2007.
4. Drawing – With the capability to sense pressure applied at the pen tip (up to 8192 levels), Digital Pen is required to realize full functionality of professional drawing software such as Adobe Photoshop, Adobe Illustrator, CorelDraw, Corel Painter, and so on.

**5. Both of P80 and P90 do not require a battery and the end of them has an eraser function.**



#P90



#P80

# Usage Guide

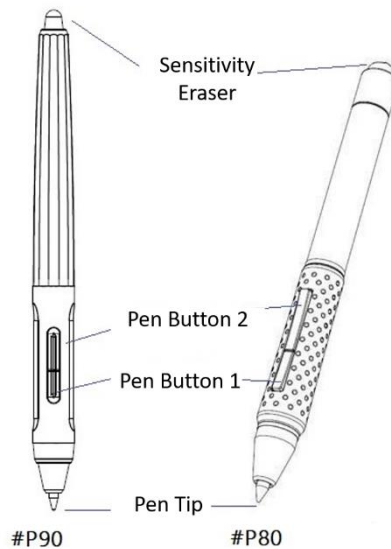
## 1. Using Digital Pen

Digital Pen functions as a three-button mouse.

Pen Tip: a left button

Pen Button 1: a right button

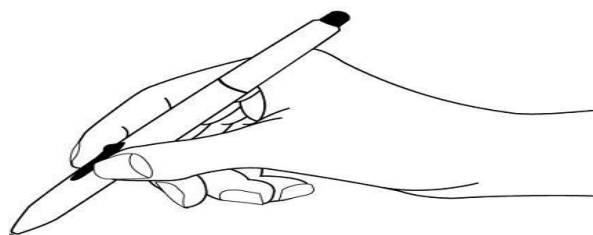
Pen Button 2: a middle button or eraser toggle.



**Diagram 1 Parts of Digital Pen**

Note: Pen Buttons 1 and 2 may be programmed for functions other than what are described above.

### 1.1 Cursor Movement



**Diagram 2 Holding Digital Pens**

Hold Digital Pen as you would a regular one. The Tablet senses the Pen up to 1/4" (about 5 mm) above its surface. Please do not let the Pen touch the Tablet surface when you simply want to move the cursor position.

## 1.2 Drag and Drop

- (1) Move the cursor to the object you wish to drag, press Pen Tip against the Tablet surface.
- (2) Move Digital Pen while keeping Pen Tip in touch with the Tablet surface to drag the object until the object is at the desired location.
- (3) Lift Pen Tip above the Tablet surface to drop the object.

## 1.3 Single “Click” with Pen Tip

Touch the surface of Digital Tablet briefly with Pen Tip and lift immediately. This action, also referred to as “tapping,” is equivalent to “single clicking” the left button of a regular mouse.

## 1.4 Double “Click” with Pen Tip

Tap the surface of Digital Tablet twice in a row with Pen Tip, and try to tap at the same spot. This action is equivalent to “double clicking” the left button of a regular mouse.

Note: When you tap the Tablet surface the first time, make sure Pen Tip does not move while it touches the surface so as to avoid inducing a drag and drop action.

## 1.5 Calling up Context Menu with Pen Button 1

This is equivalent to using the right button of a regular mouse to call up context menu.

- (1) Press and hold Pen Button 1.
- (2) Without touching tablet surface, move Pen Tip so the cursor is at the desired object on the screen.
- (3) Tap the tablet surface to call up the context menu.
- (4) When the context menu shows up, move Pen Tip to move cursor to the desired action item in the menu.
- (5) Tap the selection.

## 1.6 Storing Digital Pen

When Digital Pen is not in use, make sure Pen Tip does not touch anything to avoid a constant drain on the pen’s battery. Simply keeps Digital Pen in a pen holder or a cup with Pen Tip pointing upward.

## 1.7 Digital Pen & LED Indicator

When you hover Digital Pen over Active Area, LED Indicator will blink slowly. This indicates that Digital Tablet has detected Digital Pen. Blinking stops as soon as Pen Tip moves out of Active Area or is lifted up too high (more than about 1/4” or 5mm).

If LED Indicator does not blink when Digital Pen hovers over Active Area, the most likely cause is a weak battery in Digital Pen. Simply replace the battery and try again. When Digital Pen is detected, moving Digital Pen around within Work Area will move the cursor on the screen correspondingly.

## 2. Pressure Sensitivity

When you draw with Digital Pen on Tablet, the Tablet senses the pressure you apply and sends that information to the application controlling Digital Tablet. The application program can then use this pressure information to simulate various effects of soft tip pens such as a paint brush. This is known as *Pressure Sensitivity* function.

It is important to know that pressure sensitivity requires the support of an application program. For a program that supports pressure sensitivity, such as Photoshop, this feature may sometimes be inadvertently turned off.



**Diagram 3 Sample drawings using a pressure sensitive Digital Pen**

Note: If the displayed Pressure Value does not vary as you press Pen Tip, there is either no Pressure Sensitivity function. It means driver Software has not been properly installed.

# Setup Guide

## 1. Digital Tablet Device

### 1.1 System Requirements

(1) Pentium III equivalent PC or Higher Version, with Microsoft Windows XP, Vista or Win 7, Win 8.1, Win 10. 32/64 BIT

(2) Apple Mac with Mac OS 10.6...above.

(3) Android 6.0 and above ( Check Chart 1 for compatible devices)

### 1.2 Parts Diagrams

The following diagram shows the parts of Digital Tablets

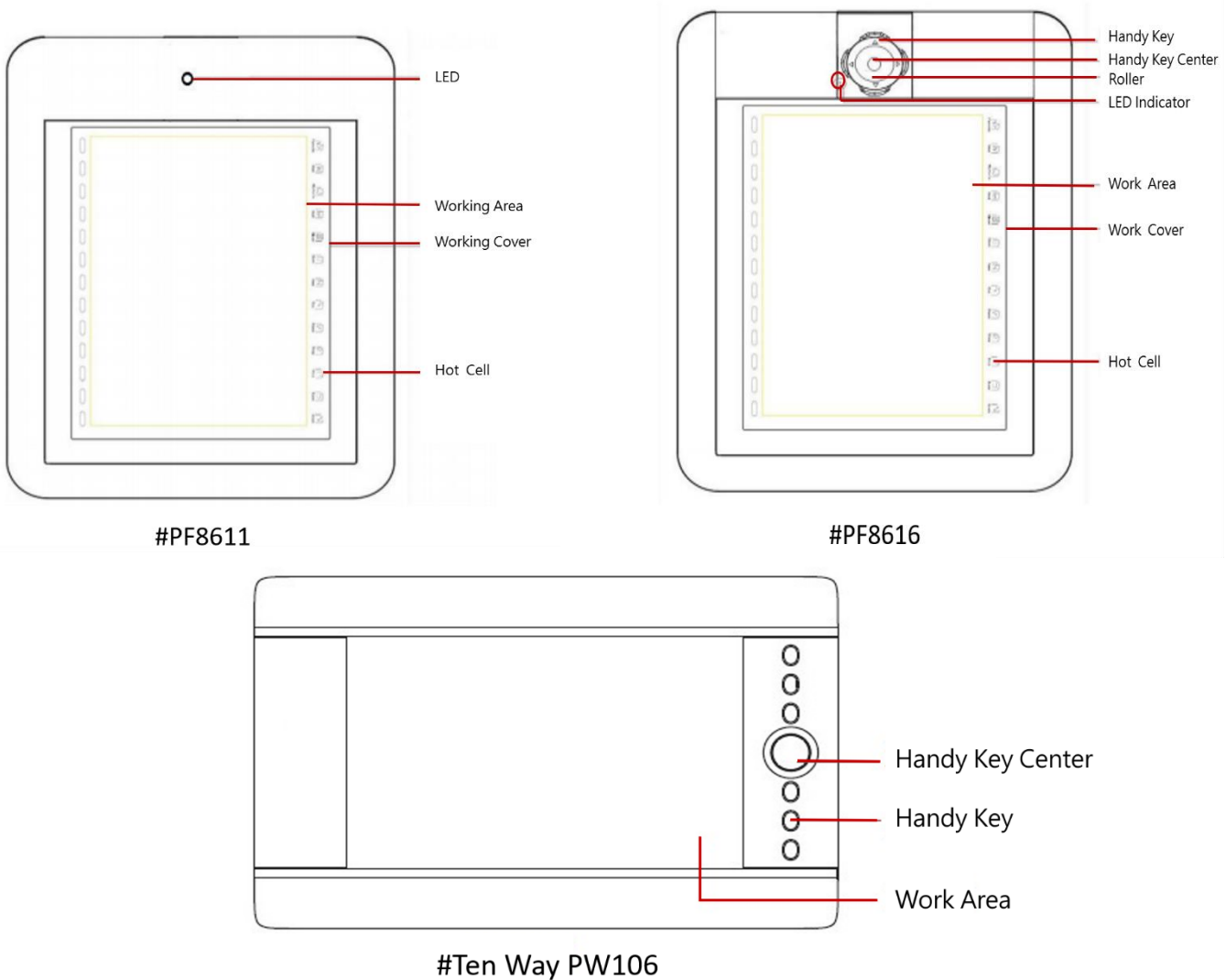


Diagram 4 Parts of Digital Tablet

## 2. Using Digital Tablet Device Right Away

You may start using Digital Tablet Device after you insert USB Connector of Tablet into an available USB port. You may control the cursor position using Digital Pen without driver installed. Driver Software need be installed to control the pressure sensitivity.

Note: For best performance, please plug the USB Connector directly into a USB port of your PC or Notebook instead of a USB Hub or other exterior USB port device.

## 3. Installing Driver Software

Note: 1. Before the installation, please make sure all other brand's driver has been uninstalled clearly  
2. Please temporarily turn off the antivirus software during the installation  
3. After installation, please follow the instructions message for reboot or not reboot the systems

### 3.1 Step 1: Start the setup program

Please go to [Aery Official Website <https://www.aery.pro>] ► [Download] to download the driver.

Please download the driver depend on the operation system of your device.


### 3.2 Step 2: Go through the setup steps

Press Enter Key on the installation menu and you may press enter Key on all subsequent menus until the program ends. Or, you may make selections according to the instructions on the screen.

### 3.3 Step 3: Connect Digital Tablet

When you connect Digital Tablet, insert USB connector to a USB port (>70mA) on the computer. For best results, we recommend against using a USB hub or an USB port on an exterior device.

## 4. Verifying Driver Software installation

After Driver Software is installed successfully, Tablet Icon () will show up in System Tray, which normally sits at the lower right corner of the screen. Clicking this icon calls up Tablet Configuration Panel to test the pressure sensitivity.



# Configuration Guide

## 1. Tablet Configuration Panel

### 1.1 Calling up Tablet Configuration Panel

1.1.1 The first step to customize or to diagnose Digital Pen Device is to call up Tablet Configuration Panel. Tap on Tablet Icon (☑) at the lower right corner of the screen.

#### 1.1.2 Call up Tablet Configuration Panel from Control Panel

**For Windows Vista or Windows 7:**

[Start] ► [Control Panel] ► [Tablet Setting]

**For Windows 10:**

[Start] ► [Control Panel] ► [Hardware and Sound] ► [Tablet Setting]

### 1.2 Configuration Options

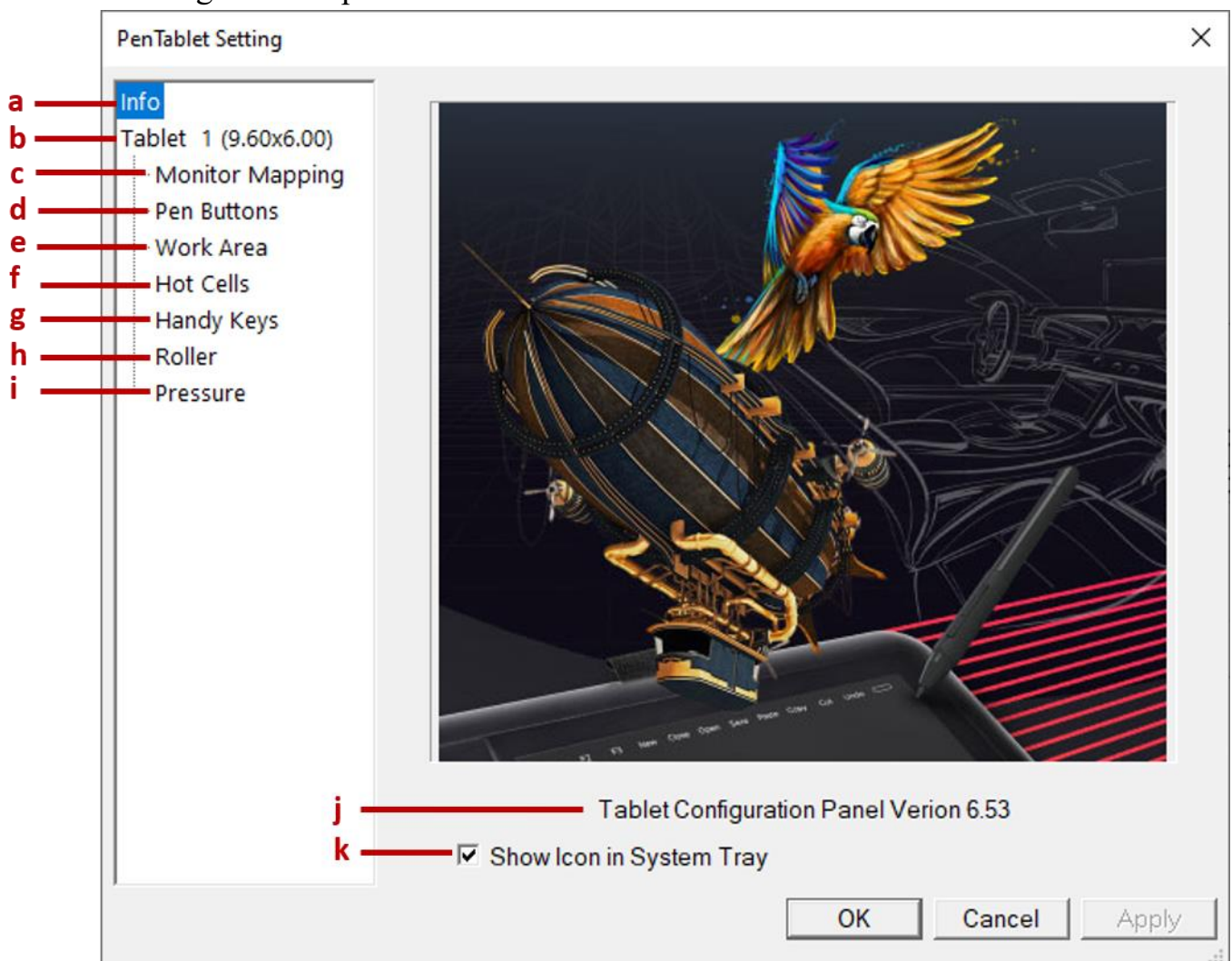
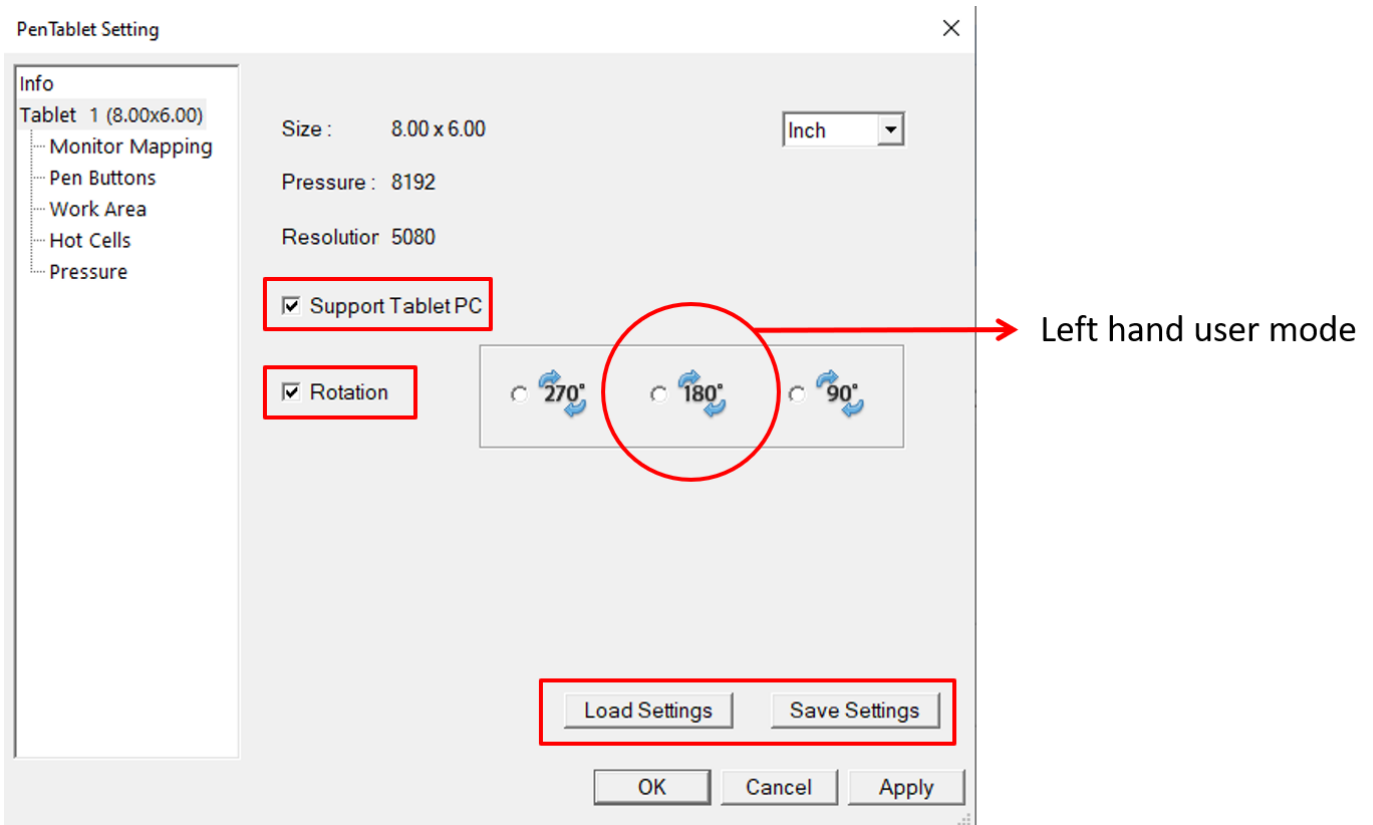


Diagram 5 Tablet Configuration Panel

Tablet Configuration Panel displays Active Area size, version number of the current Tablet Configuration Panel, and all configuration options of Digital Tablet.

- a. Info – on other configuration pages, tap this to return to this page
- b. Tablet 1 (9.60×6.00) – displays width and height of Active Area in inches and set up for Left-handed User
- c. Monitor Mapping – tap to map Active Area to a part or all of monitor screen
- d. Pen Buttons – tap to customize the functions of Pen Buttons
- e. Work Area – tap to adjust the size and position of Work Area within Active Area
- f. Hot Cells – tap to define the functions of Hot Cells
- g. Handy Keys – tap to define actions of Handy Keys (only for PF8616, PF1061, PW106)
- h. Roller – tap to define action of Roller (only for PF8616, PF1061, PW106)
- i. Pressure – tap to customize and test the pressure sensitivity feature
- j. Tablet Configuration Panel Version ... – information about the driver version
- k. Show Icon in System Tray – select to display or hide Tablet Icon in System Tray

## 2. Handwriting Left handed user & settings export

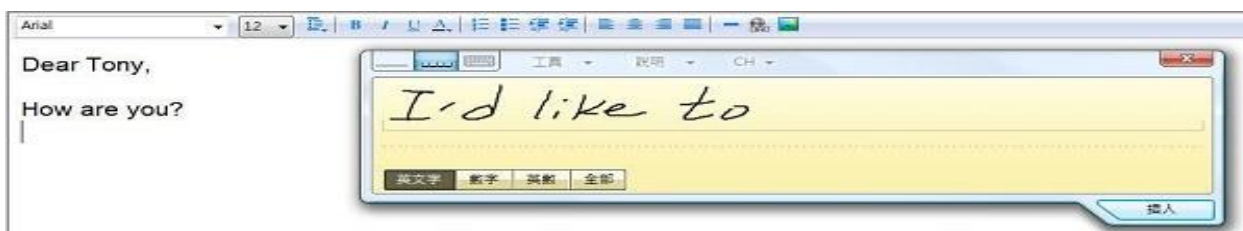


**Diagram 6 Basic Mode option (Tick or Unpick)**

### 2.1 Support Tablet PC:

Tick the box of “Support Tablet PC”, you can link to Microsoft's handwriting input software and

WORD, EXCELL or other built-in handwriting annotation software.



## 2.2 Rotation:

For setting up for “Left hand user” mode, please tick the box of “180°” as diagram show below. After changing to the “180°” mode, the pen table use direction will upside down from the Right hand mode and the way of settings will automatically be applied.

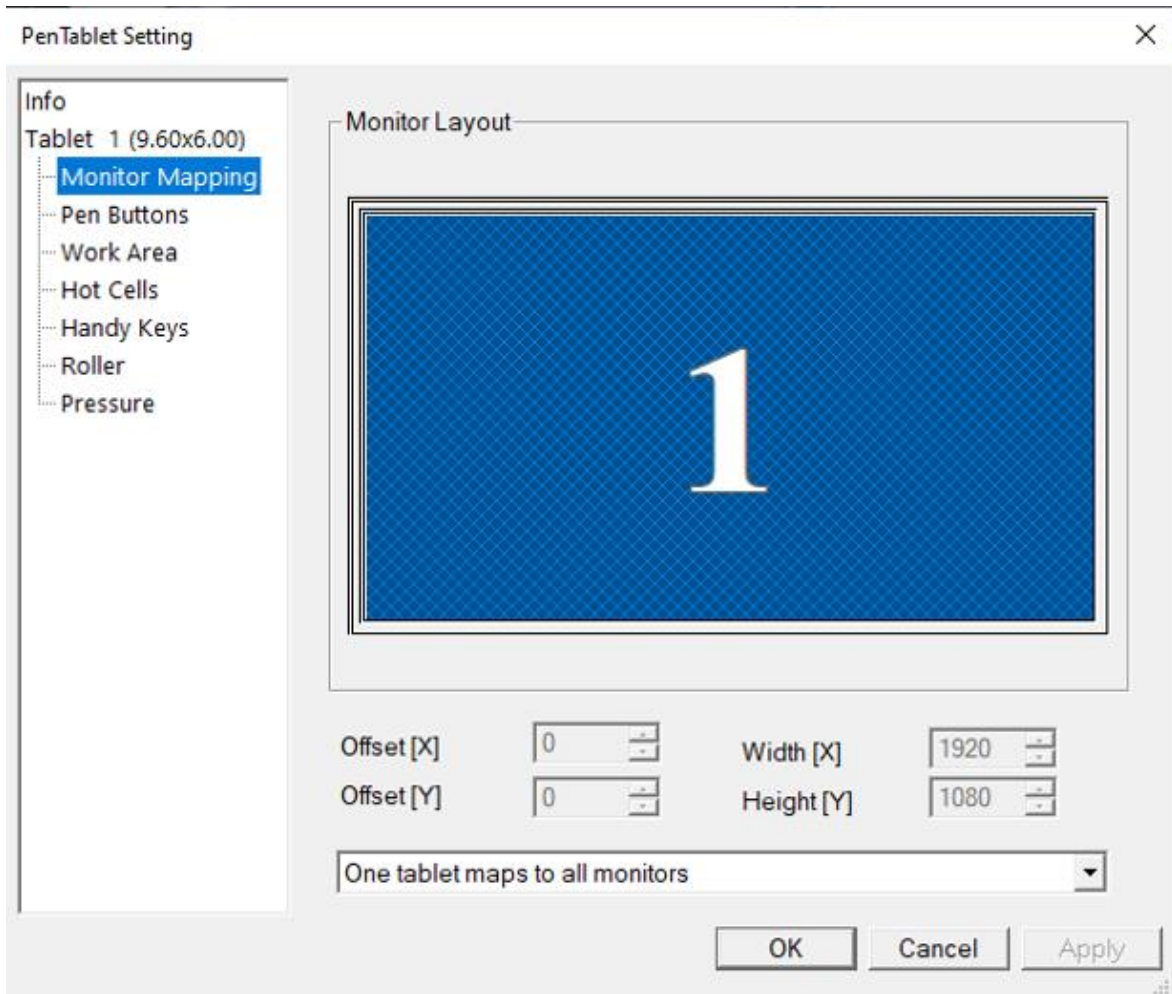


## 2.3 "Save Settings"&"Load Settings"

"Save Settings" can be export the settings information of the control panel as "TSF" file, "Load Settings" can import other files have been saved in the “TSF” file.

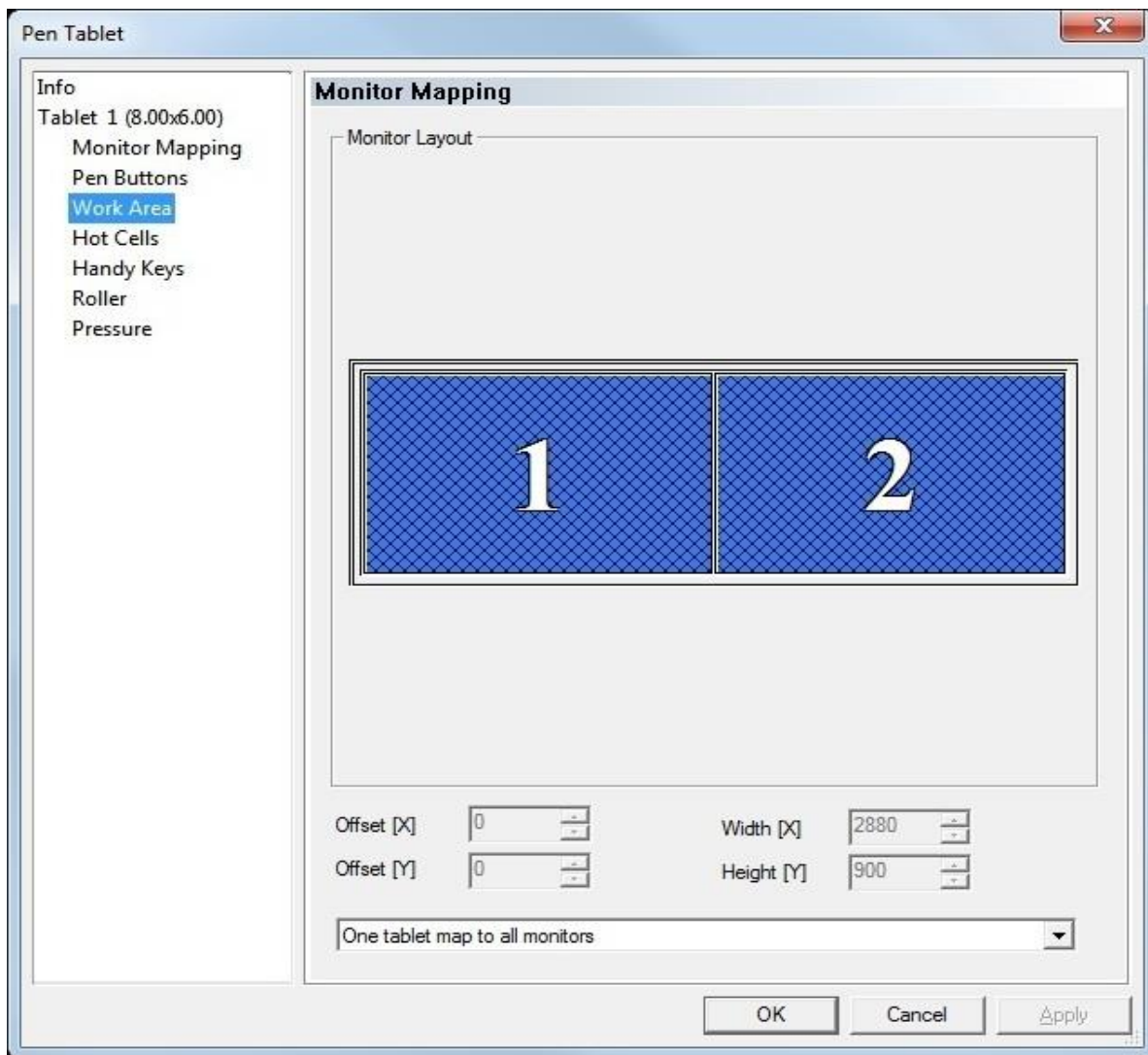
### 3. Monitor Mapping

Monitor mapping option allows you, when you have two monitors, to map the tablet either to both monitors or just one of them.



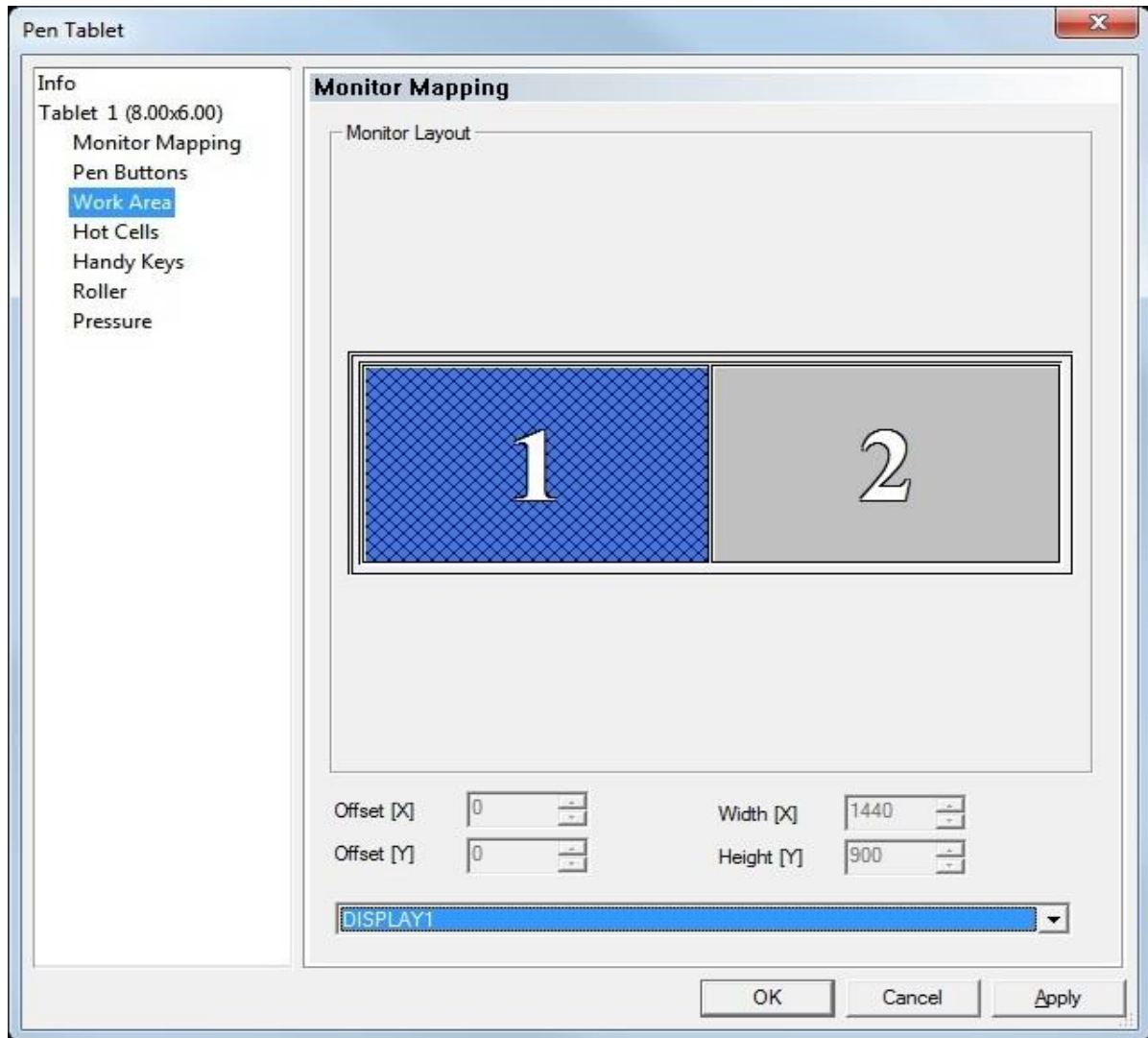
**Diagram 7 Monitor mapping option with only one monitor present**

The diagram below shows, with two monitors present, the tablet is mapped to both monitors, such that when you move Digital Pen across the entire Work Area, the cursor will move from one monitor to another. It is possible to move the cursor to any place on both monitor.



**Diagram 8 Tablet area mapped to both monitors**

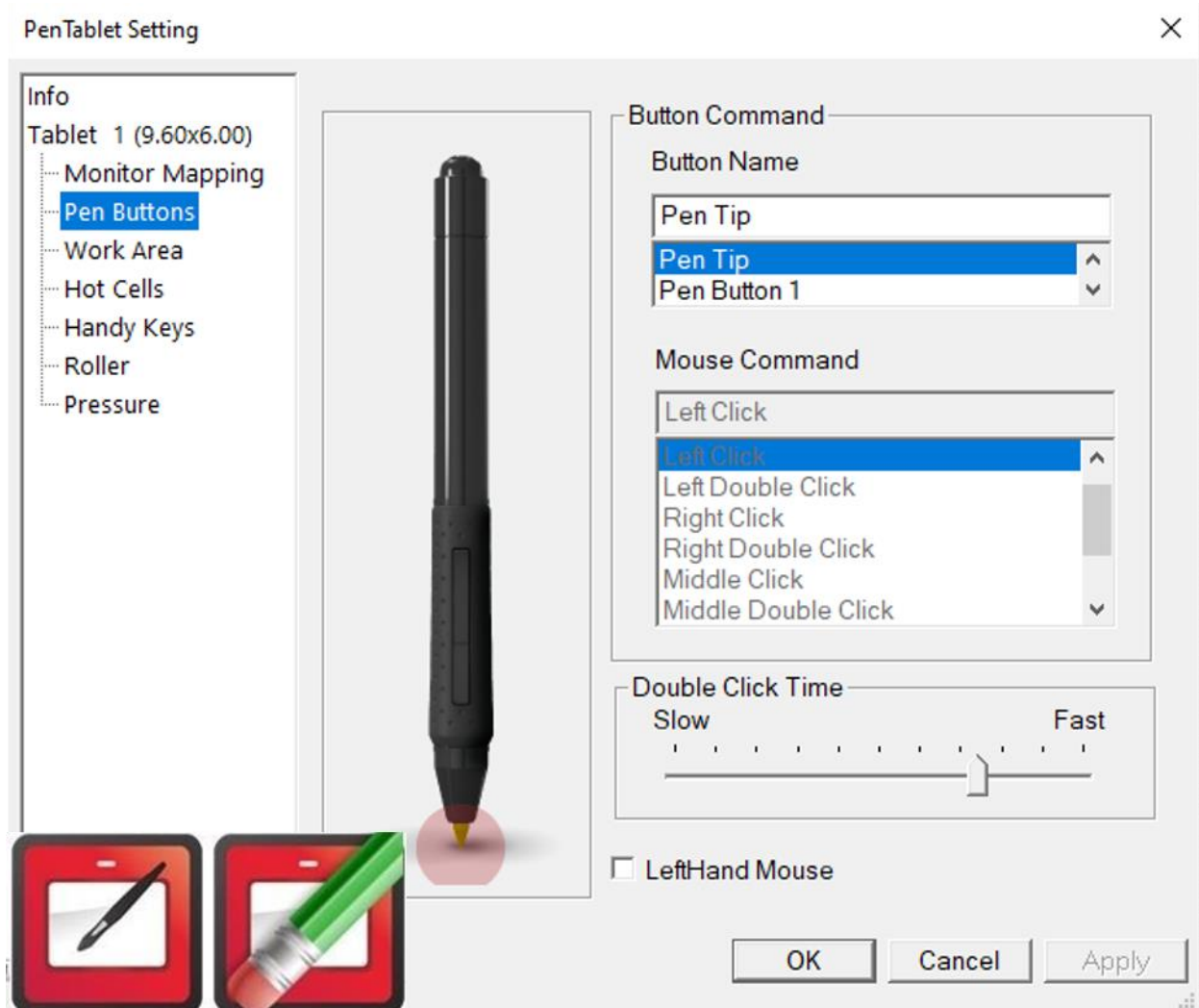
The following Diagram shows the case when the tablet is mapped to Monitor 1. In this case, move Digital Pen across Work Area will move the cursor across Monitor 1 only, and will never reach Monitor 2.



**Diagram 9 Tablet areas mapped to Monitor 1**

## 4. Configuring Pen Buttons

Pen Buttons option allows you to customize the functions of Pen Buttons.



**Diagram 10 Configure Pen Buttons**

### 4.1 Configuring Pen Buttons

You program Pen Buttons to different mouse commands by

- (1) Selecting a button in Button Name area, and
- (2) Selecting a mouse command from the pull down list in Mouse Command area.

After configuration, pressing the specified button will cause it to perform the designated mouse command.




Note: Pen Tip may only be defined to function as the left mouse button.

### 4.2 Double Click Time

To allow more time to tap the second time after the first, move the slider bar in Double Click Time Area toward "Slow."

Note: Changing Double Click Time will simultaneously change this time for Digital Mouse as well as the two Pen Buttons.

### 4.3 Eraser Toggle

If Pen Button 2 is defined as the "Eraser Toggle", pressing the button will toggle between the functions of Pen Tip and Eraser. The icon  corresponding to Pen Tablet in the lower right of the screen would change to , indicating eraser function. Pressing the button again will revert the function back to Pen Tip, indicated by  as the Pen Tablet Icon.

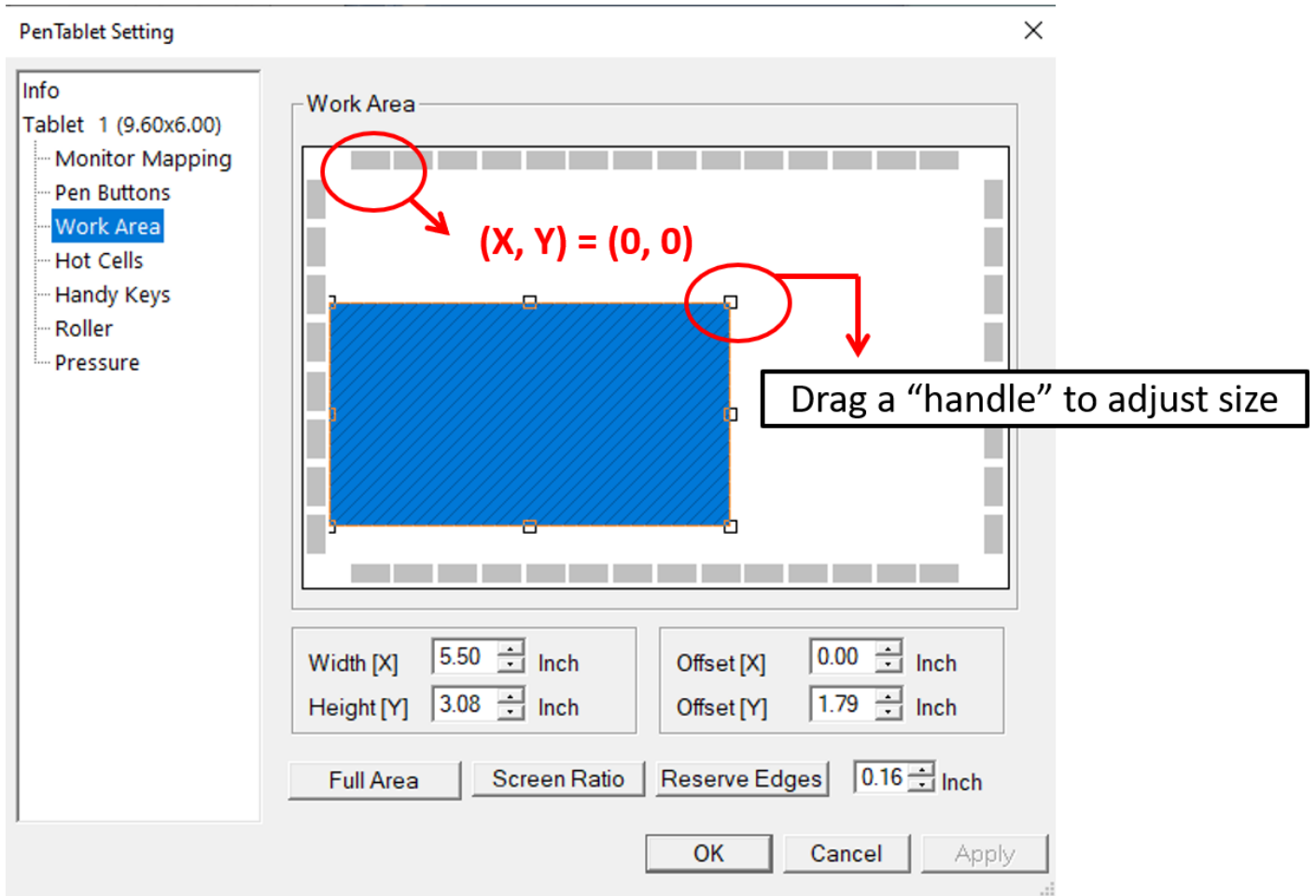
Note: Changing pen button, please keep the pen up to 1/4" above its surface. The time for switching pen button is about 1/2 sec. not for continuing change.

## 5. Adjusting Work Area

### 5.1 Work Area

This part of the Panel shows Work Area and Hot Cells surrounding it. To adjust the size of Work Area, select Work Area by tapping it and dragging one of the "handles" (small squares). To adjust the position, drag Work Area to desired position.





**Diagram 11 Adjusting Work Area**

Active Area is the area of Digital Tablet within which Digital Pen can be detected. Work Area is an area within Active Area, where Digital Pen can control the cursor on the computer screen.

If you reduce the size of Work Area, small movements of Digital Pen would move the cursor a proportionally long distance. This may be preferred when working with a large Digital Tablet.

## 5.2 Work Area Dimensions

This part of the Panel shows the dimensions of Work Area in real time as you adjust Work Area. You may also set the numerical values of these dimensions, and the effects will be reflected graphically in real time also.

## 5.3 Work Area Offset

This part of Panel shows the position of the upper left corner of Work Area relative to the upper left corner of Active Area minus areas reserved for Hot Cells. Offset [X] indicates the horizontal distance; Offset [Y] indicates the vertical distance. You may also set the numerical values of these offsets, and the effects will be reflected graphically in real time.

## 5.4 Full Area

To obtain the largest possible Work Area, tap Full Area button. Many users would tap Screen Ratio button right after this.

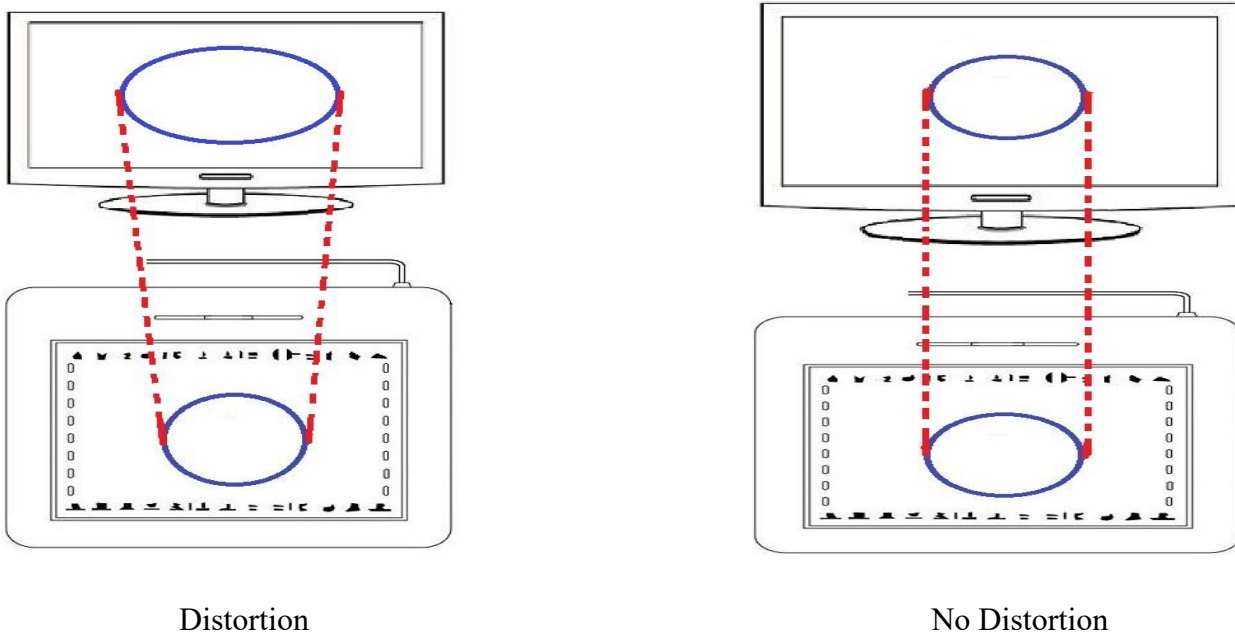
When the aspect ratio of resulting Work Area is different from that of the computer screen, tapping Full Area without Screen Ratio may not be desirable. Drawing a perfect circle, for instance, on the Tablet might result in an eclipse on the screen.

## 5.5 Screen Ratio

The Screen Ratio button is used to address a special problem, namely the distortion on the computer screen from what is drawn on the Tablet. Tapping this button automatically eliminates such distortion by adjusting the width or height of Work Area to have the same aspect ratio as that of the computer screen.

Note: We recommend that you tap Screen Ratio button every time you change the size or shape of Work Area

When the aspect ratio of Work Area is different from that of the computer screen, distortion results, as shown in the left of Diagram 2. No such distortion exists when the aspect ratios are the same, as shown in the right.



**Diagram 12 Distortion of graph drawn on tablet due to different aspect ratios**

## 5.6 Reserving Edges

Tap Reserve Edges button in order to allocate space on the edges for Hot Cells. This would reduce the size of Work Area.

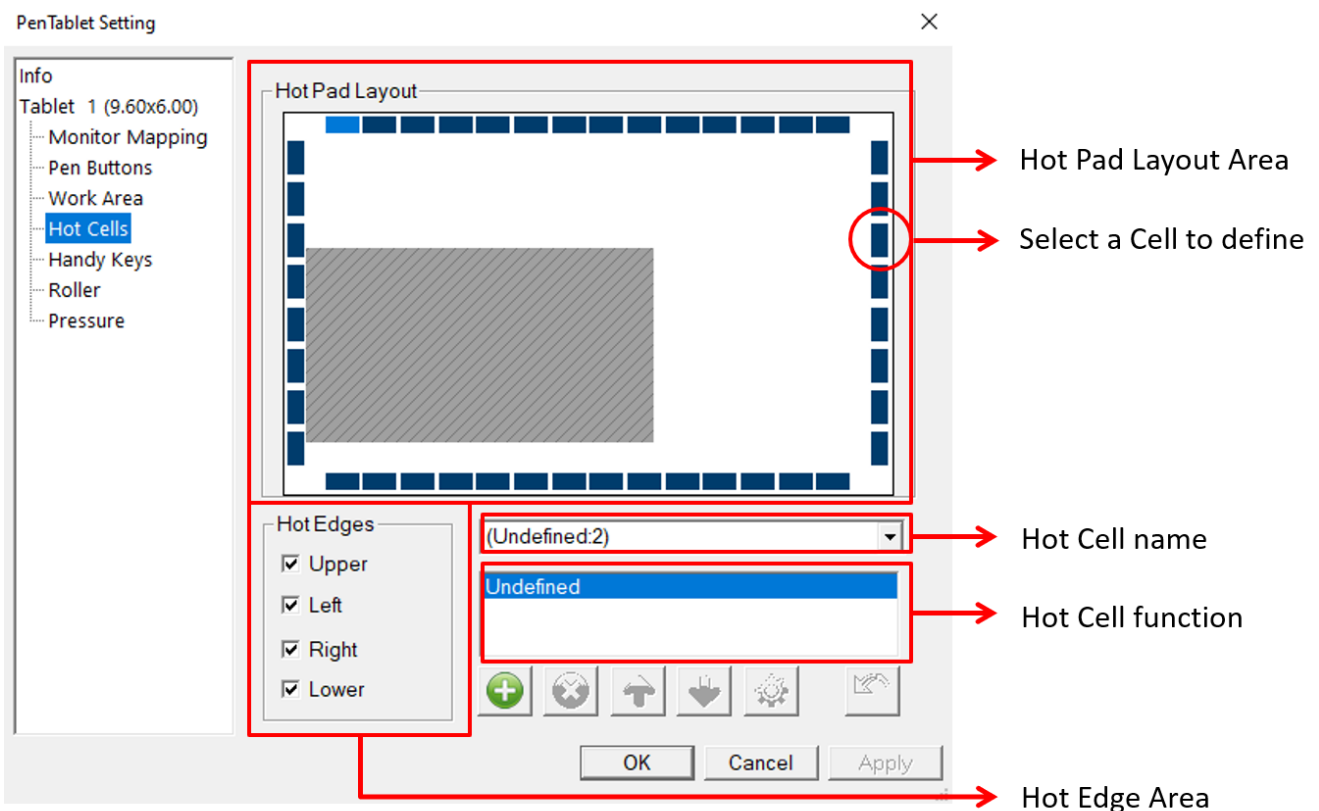
## 6. Configuring Hot Cells

Hot Cells are small rectangular areas on the edges of Active Area on Digital Tablet. When you tap on one of these cells, a pre-defined function is executed, if one is defined. You may define these functions as you wish, such as visiting a web site, starting a word processor, playing a video clip, and so on. There may be functions already defined for some of the Cells with names printed on the protective cover of the Tablet.

### 6.1 Hot Pad Layout

Hot Pad Layout Area on Hot Cells Configuration Panel shows the physical layout of Hot Cells, and is also used to give a name to each Hot Cell. You use this name to remind yourself of the function defined.

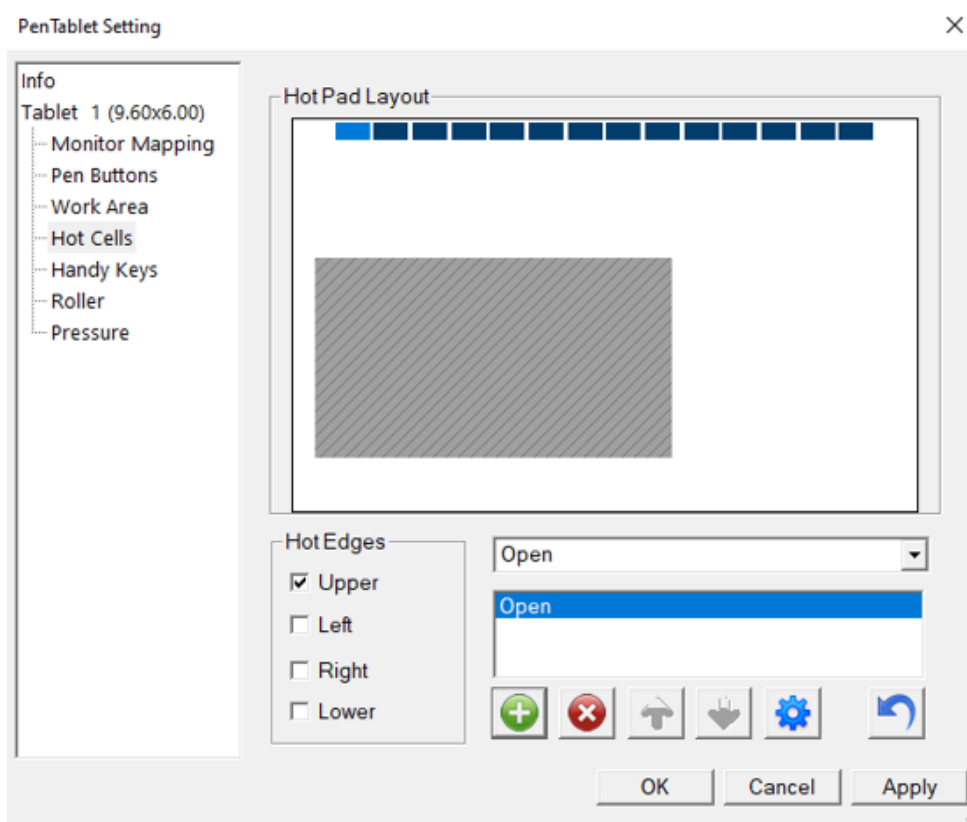
To name a Cell, select the Cell and type name in the space shown as shown below.



**Diagram 13 Defining Hot Cell function**


### 6.2 Hot Edges

You may individually turn off and on each of the four edges for Hot Cells in Hot Edges Area. In fact, in order to maximize the Work Area for drawing purposes, many users like to define no Hot Edge, or define one Hot Edge on top. See the diagram below.



**Diagram 14 Defining one Hot Edge on top of Work Area**

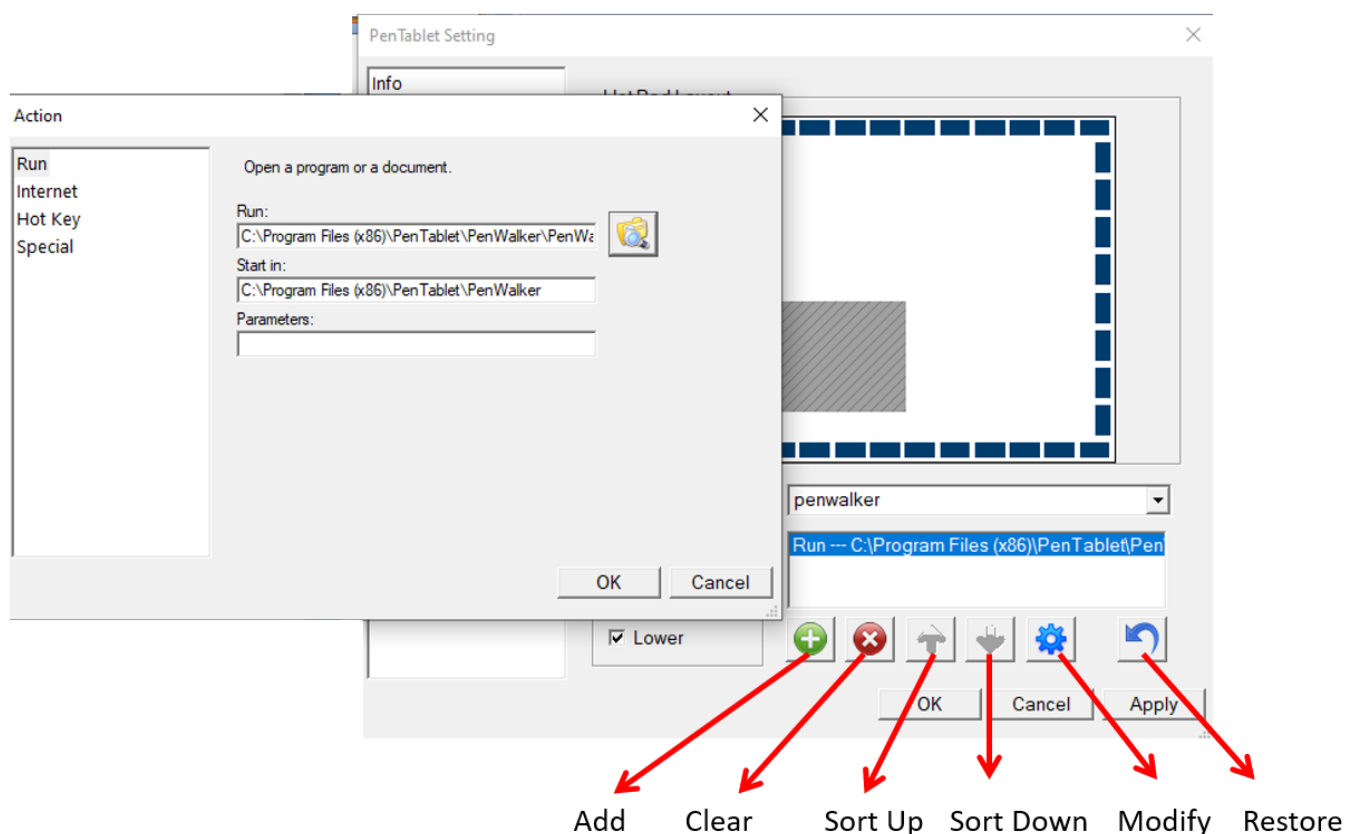
### 6.3 Defining Hot Cell function ( )

To define the function for a Hot Cell, first select the Hot Cell in Hot Pad Layout Area, and then tap the green plus button (  ). At this point, Hot Cell Function Panel will pop up. You may

- (1) Select Run tab to define a program to be executed,
- (2) Select Internet tab to specify a web site to be visited or another Internet service, or
- (3) Select Hot Key tab to specify a combination of keys (Hot Key combination) to invoke the same function.

### 6.3.1 Running a Program

The following diagram shows the Run tab, where you select the program to run by tapping the browse button ( ), and the folder to start the program in, with optional parameters. For example, to specify a clip to be played upon tapping a certain Hot Cell, first selects the program, and clicks the .exe file.

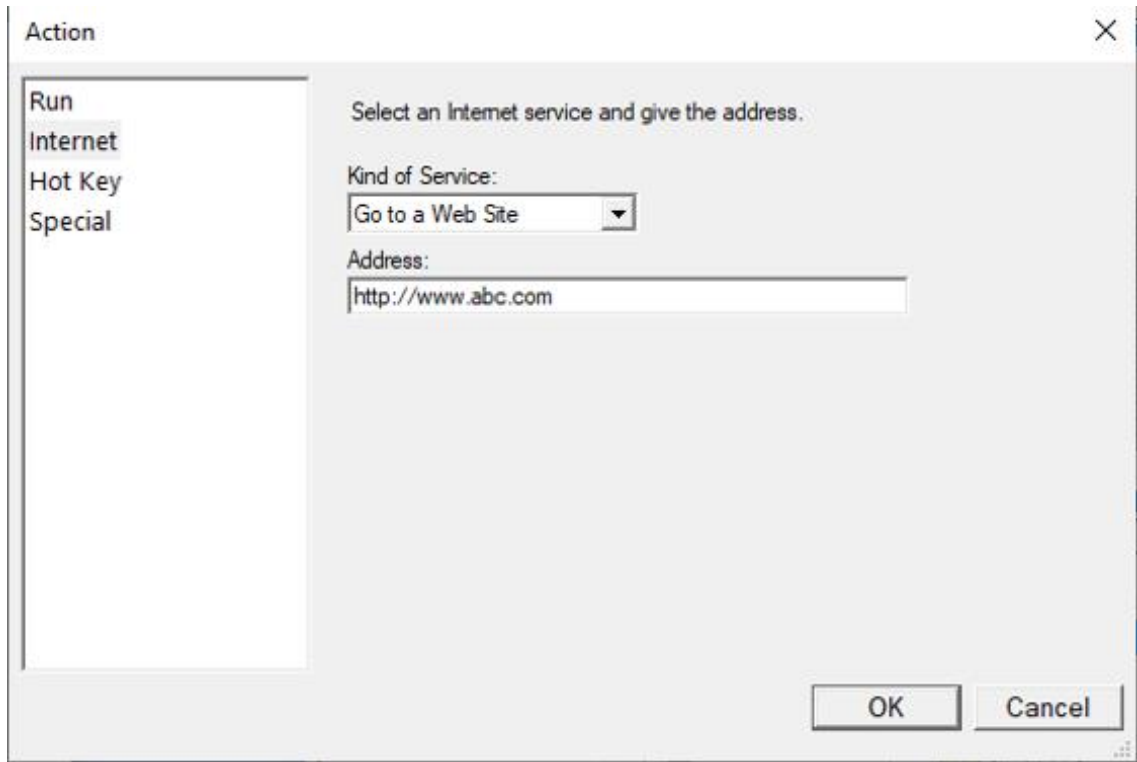


**Diagram 15 Selecting Run a Program as Hot Cell Function**

### 6.3.2 Internet service

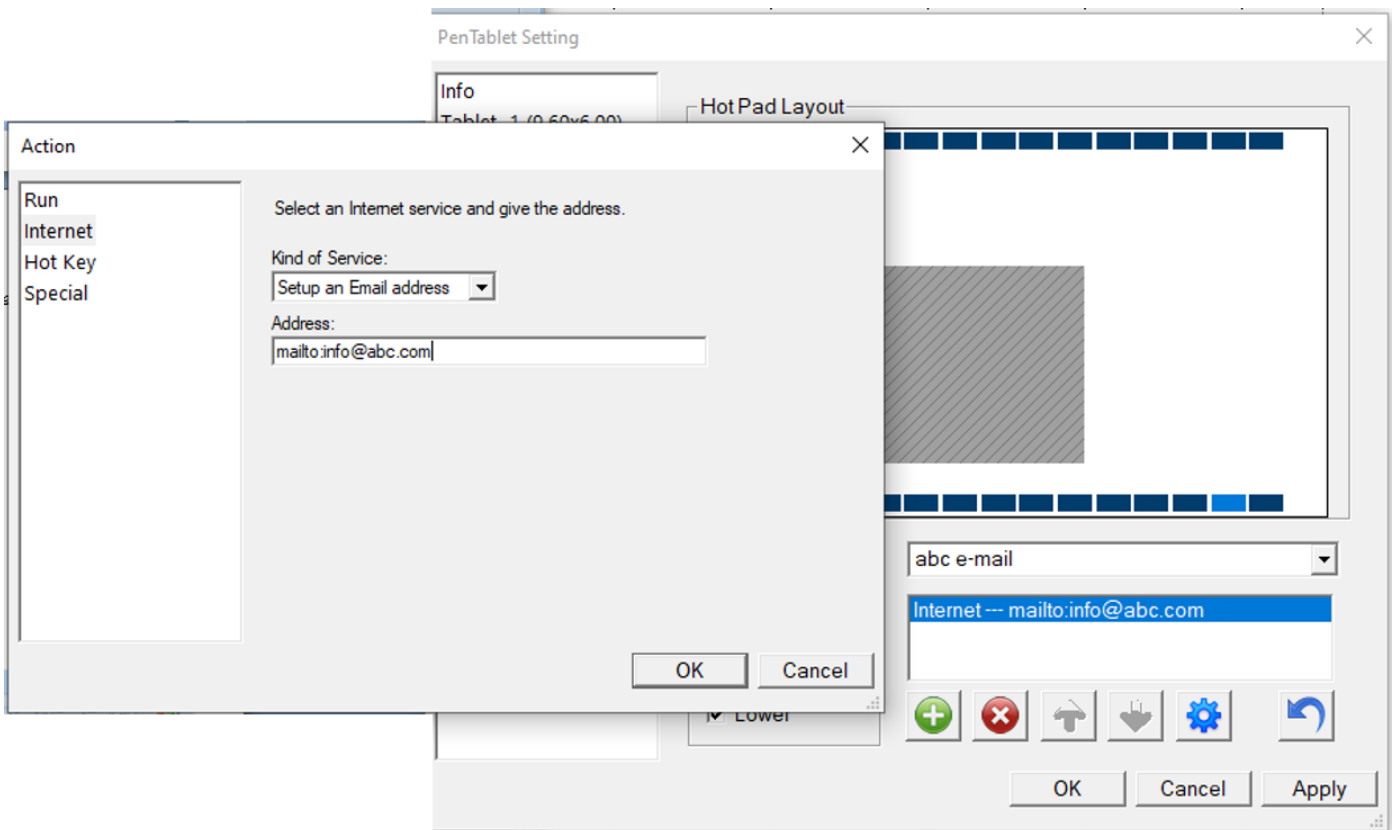
Selecting Internet tab allows you to select one of the Internet services as the function of the selected Hot Cell. Under Kind of Services, you may select

- (1) Go to a Web site – to visit a specified Web address (such as <http://www.google.com/>) with the default browser.



**Diagram 16 Selecting Internet Service as Hot Cell Function**

- (2) Set up an Email address – to send e-mail to a specified e-mail address, such as mailto:info@abc.com. After this is defined, tapping this Hot Cell will call the default e-mail program to let you work with it.



**Diagram 17 Selecting Setup an Email address as Hot Cell Function**

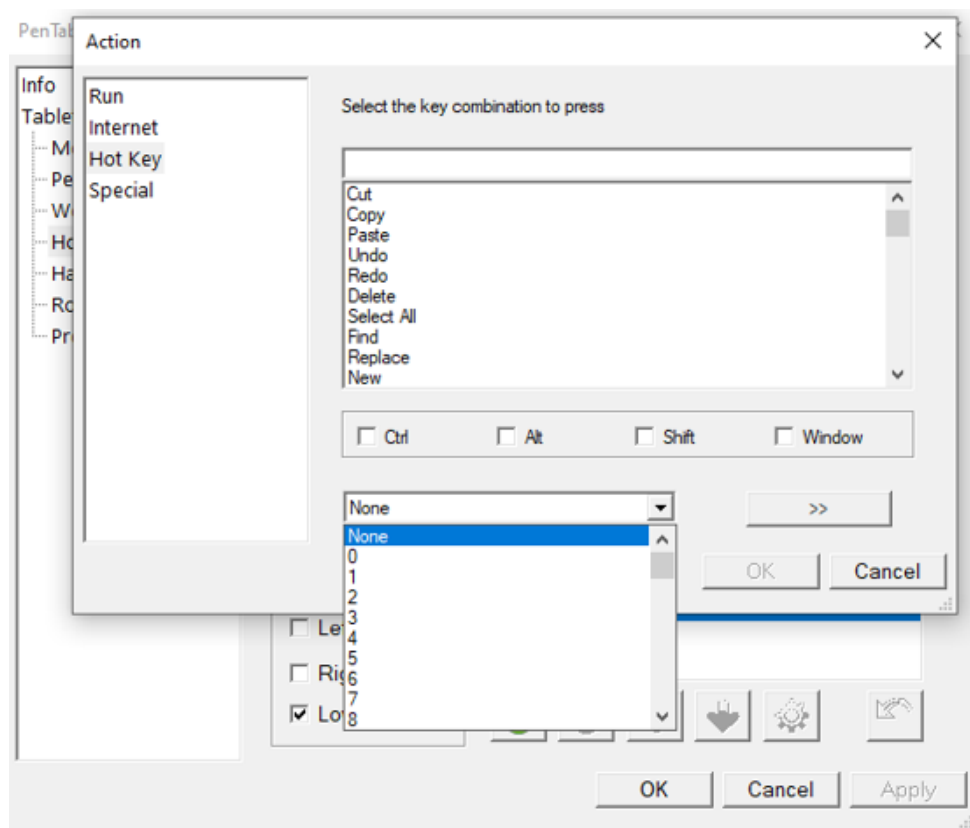
- (3) Go to a Newsgroup – to visit a specified newsgroup (such as news://.....)..
- (4) Other Internet Service – to perform some other Internet service such as ftp://ftp.abc.com.  
You define the service by entering an appropriate URL.

### 6.3.3 Specifying Hot Key combination

The Hot Key tab on Hot Cell Function Panel lets you specify a key combination (such as Ctrl-Alt-a) to invoke the function defined for the selected Hot Cell. All the keys specified in the key combination must be simultaneously pressed and released to invoke the Hot Cell function.

The key combination may be any basic key combined with any one or two or three of Shift, Ctrl, and ALT keys. The basic key must be selected from the pull down list, and may be any alphanumeric key, a cursor control key (left, right, up, or down arrow), or one of many other keys on the keyboard.

In defining key combination, no distinction is made between left and right Shift, Ctrl, or ALT keys.



**Diagram 18 Specifying a Hot Key combination to invoke Hot Cell function**

6.4 Clear (🗑️)

6.5 Sorting up (⬆️) and sorting down (⬇️)

6.6 Press ⚙️ to modify the actions previously assigned to a Hot Cell.

6.7 Press ↶️ to restore the settings.

## 7. Configuring Handy Keys (Only for PF8616, PF1061, PW106)

Handy keys and Roller provide more convenience functions to replace the mouse and keyboard functions.

Note: The center key of Handy Keys is to assist with the use of Roller. As the default, the center key is defined to select the next Action Pair as active for the Roller.

### 7.1 How to configure a Handy Key

(1).The function may also consist of a series of actions, such as "save" and "closed".

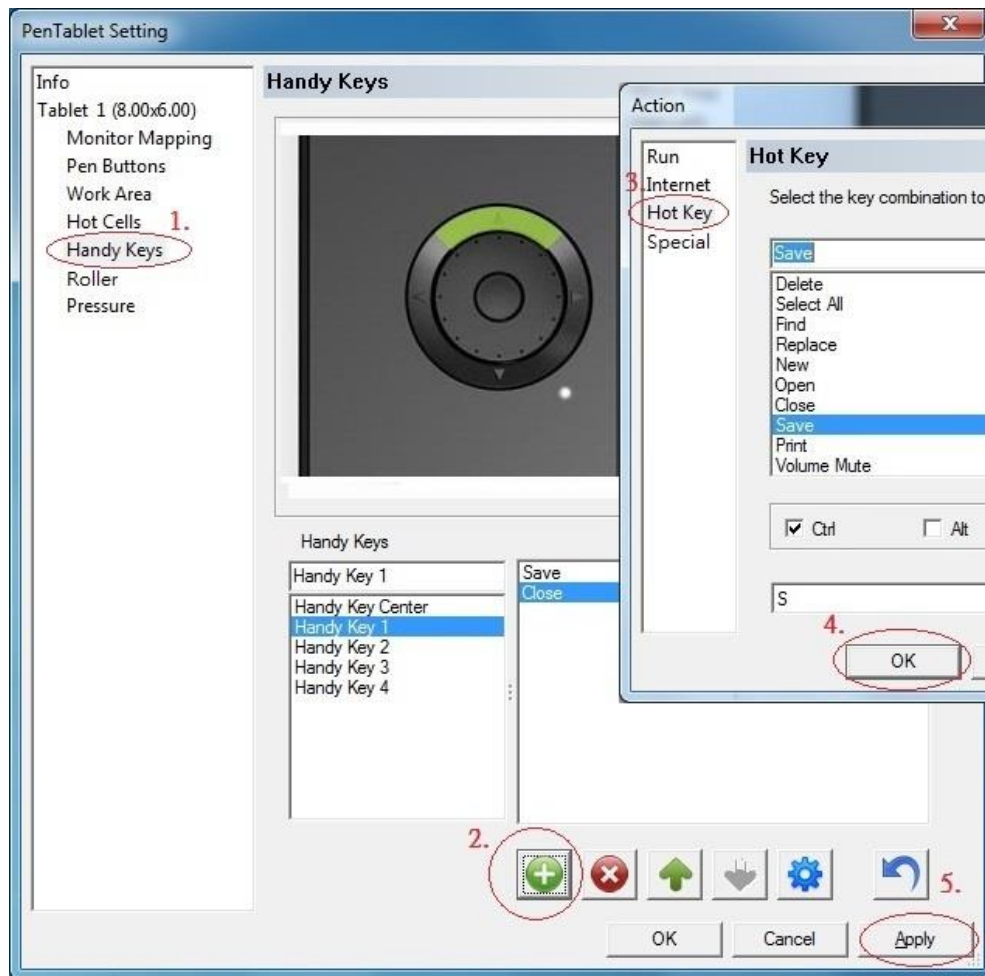
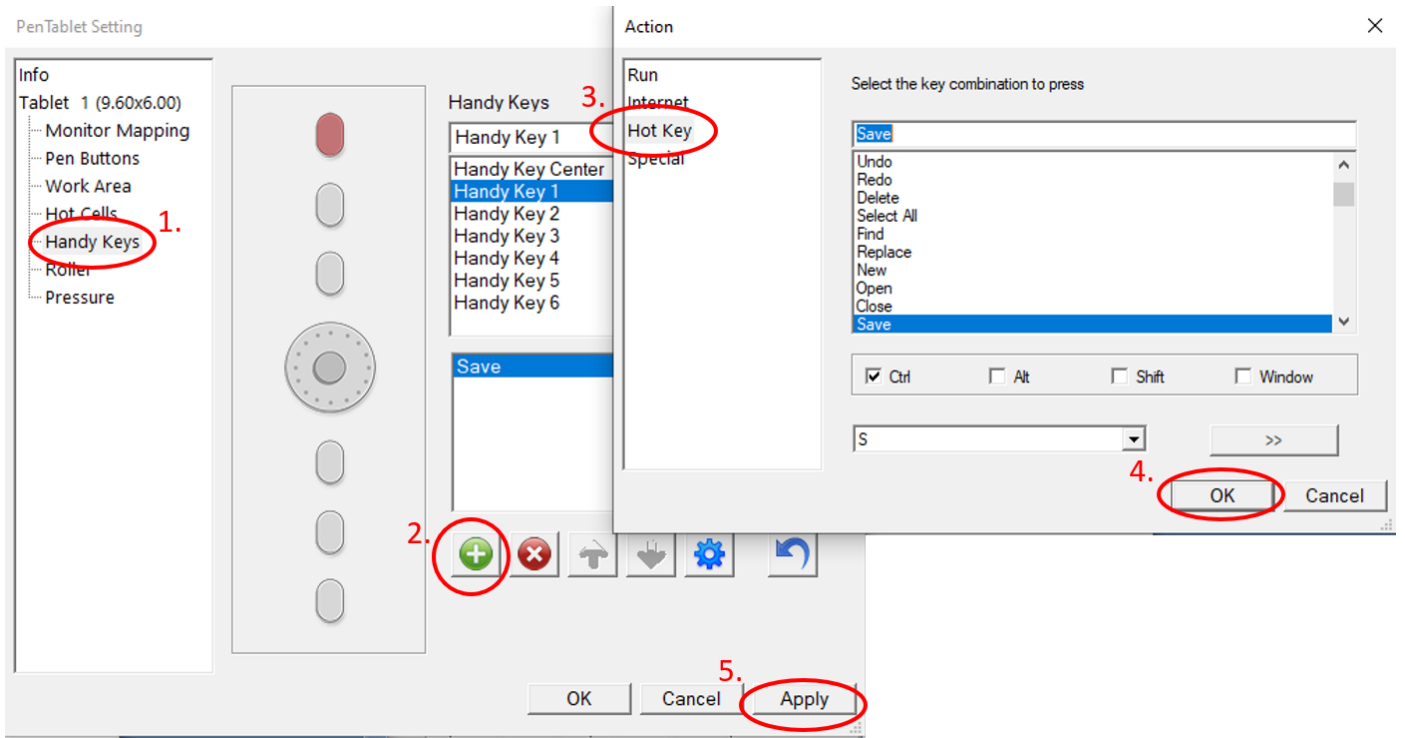



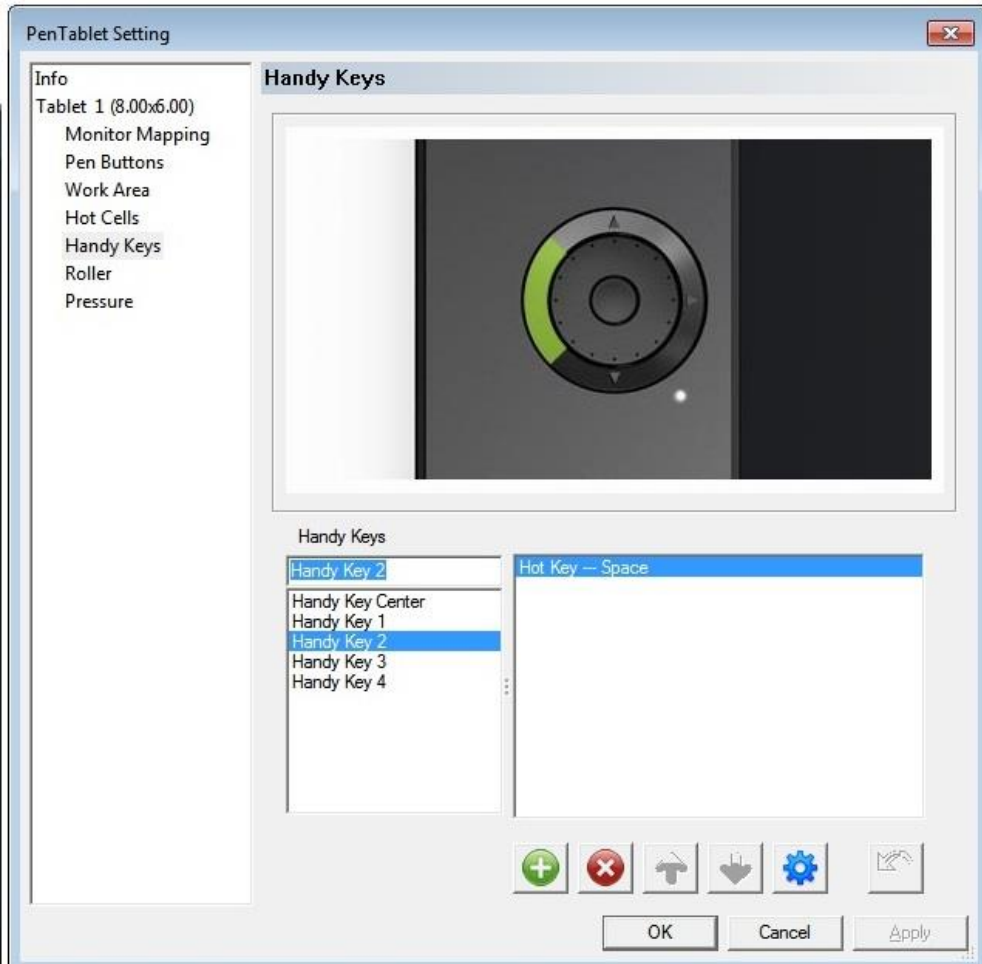
Diagram 19 Handy Key Configuration Panel (PF8616, PF1061)



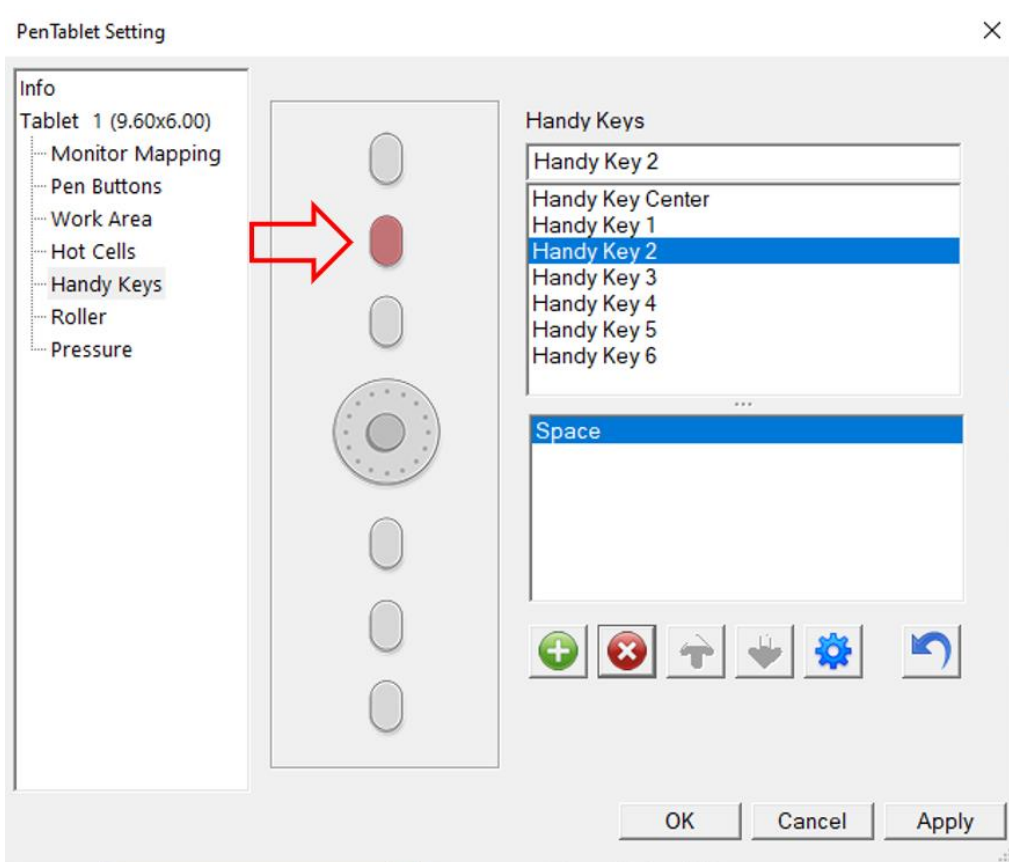


**Diagram 20 Handy Key Configuration Panel (Ten Way PW106)**

(2) To select the New button (  ) to add a “space” action to handy key 2. When the finger presses handy key 2, the cursor becomes a “hand” drawing shown on the screen. You can use the pen tip to move your artwork easily.

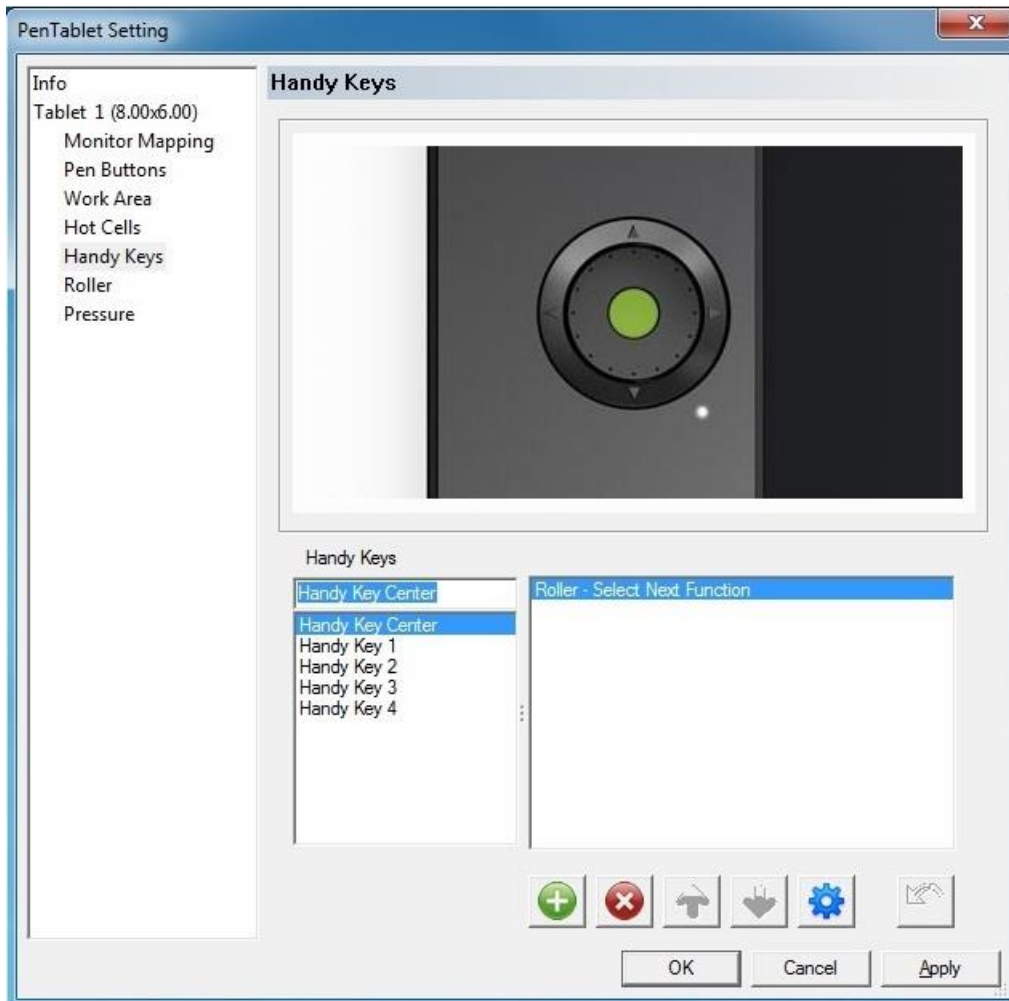


**Diagram 21 Select Add button to add a new action for a Handy Key (PF8616. PF1061)**

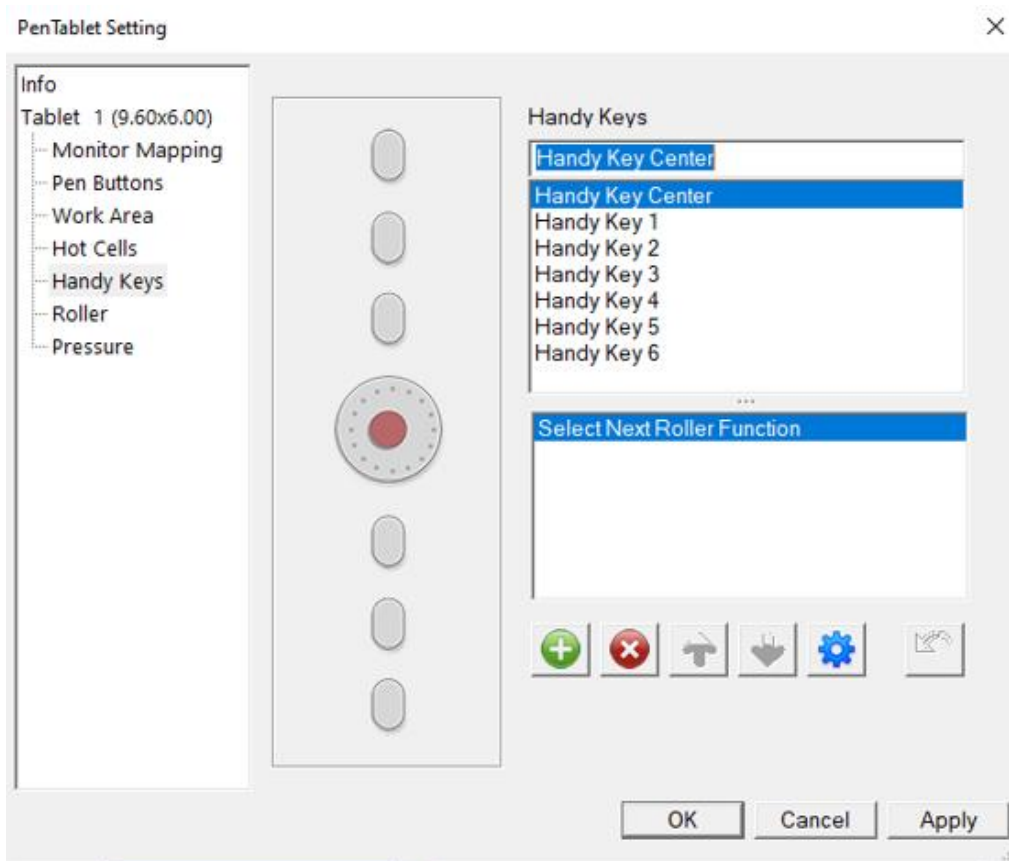


**Diagram 22 Select Add button to add a new action for a Handy Key (Ten Way PW106)**

- (3) The center key is defined to select the next action pair as active for the roller.
- (4) When press the center key, the function name shows on the bottom of the screen.



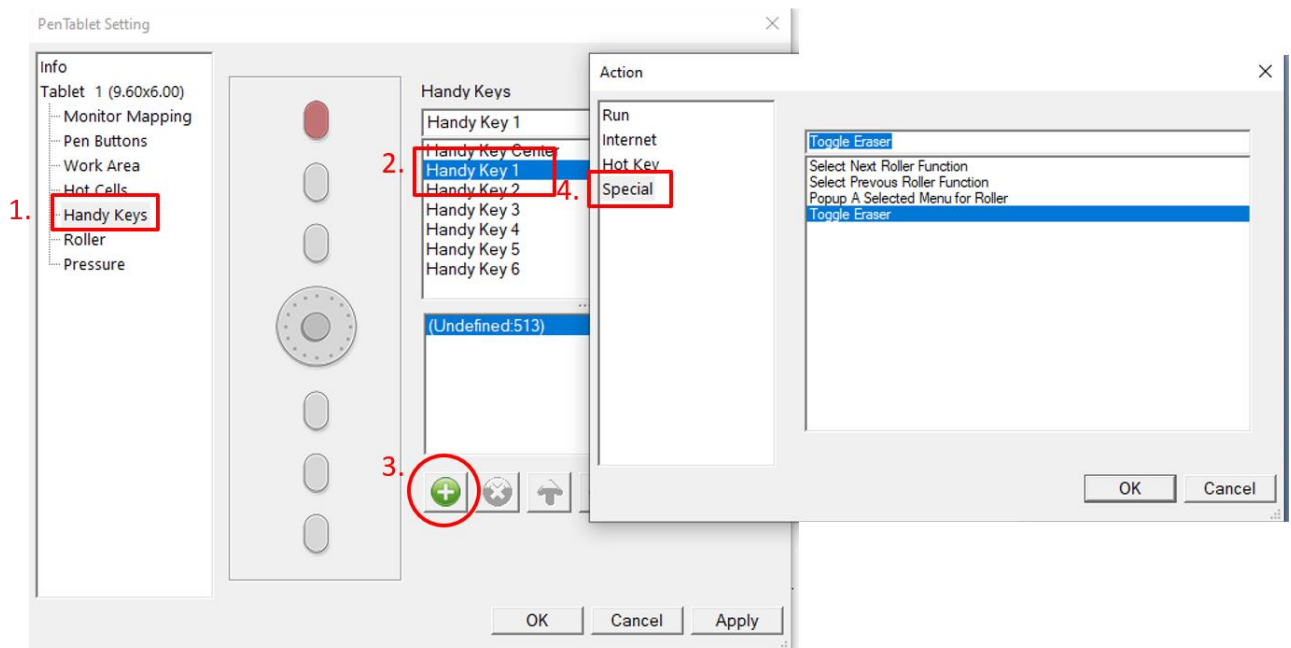
**Diagram 23 Defining Handy Key 3 (PF8616. PF1061)**



**Diagram 24 Defining Handy Key 3 (Ten Way PW106)**

## 7.2 Special Functions of Handy Keys

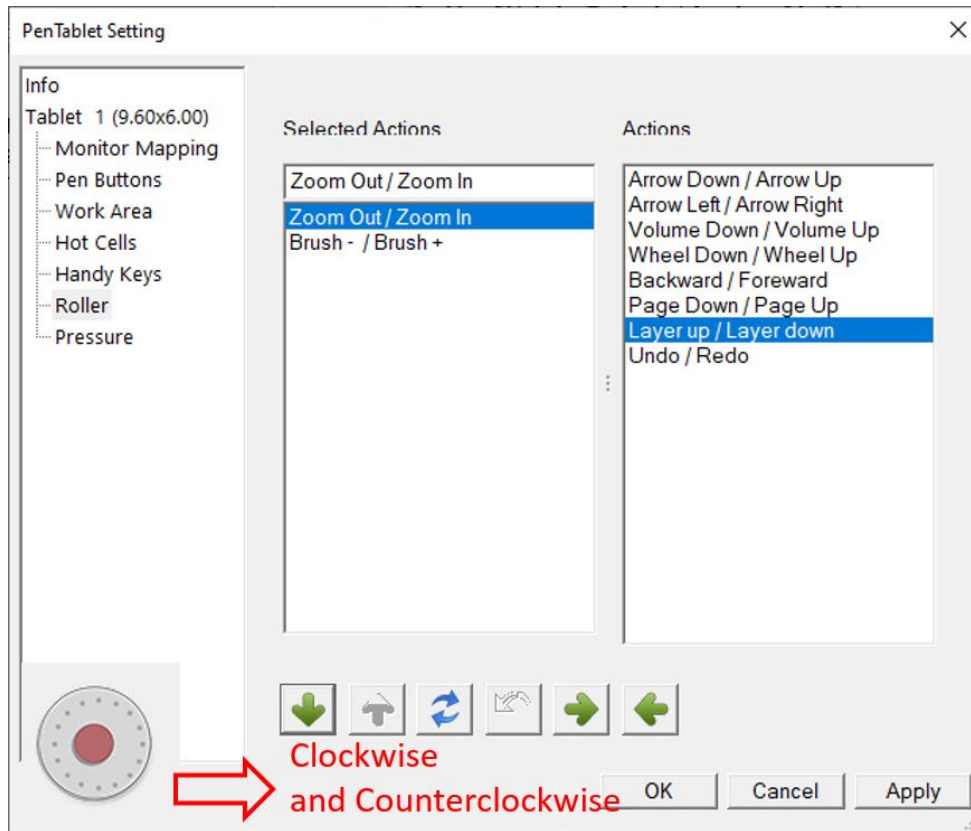
Handy keys can also be customized based on your demands. Such as handy key can be set as “eraser”.



**Diagram 25 Special Function**



## 8. Configuring Roller (Only for PF8616, PF1061, PW106)

Roller be defined to perform most popular action pairs such as room in/ room out & brush +/- brush-. These two sets of features can completely replace the mouse wheel.



**Diagram 26 Attaching “Run” action to a Handy Key**

### 8.1 Attaching Action Pair(s) to Roller

You select one of the applicable actions from the right window and press the green left arrow (  ) to add it to the Selected Action Pair list, displayed in the left window. To remove an Action Pair from the defined list, select it and press the green right arrow (  ) to remove the action defined.


### 8.2 Applicable Action Pairs

Applicable Pair	Description
wheel down/wheel up	Simulate the action of a mouse wheel – this action pair cannot be removed.
Zoom in / Zoom out	Simulate pressing Ctrl+ and Ctrl-on the keyboard.
Volume down /volume Up	Turn down or up volume when playing music or video.
Arrow down /Arrow up	Down arrow or up arrow on the keyboard.
Previous page/next	Simulate pressing Alt-left arrow or Alt-right arrow on the keyboard,

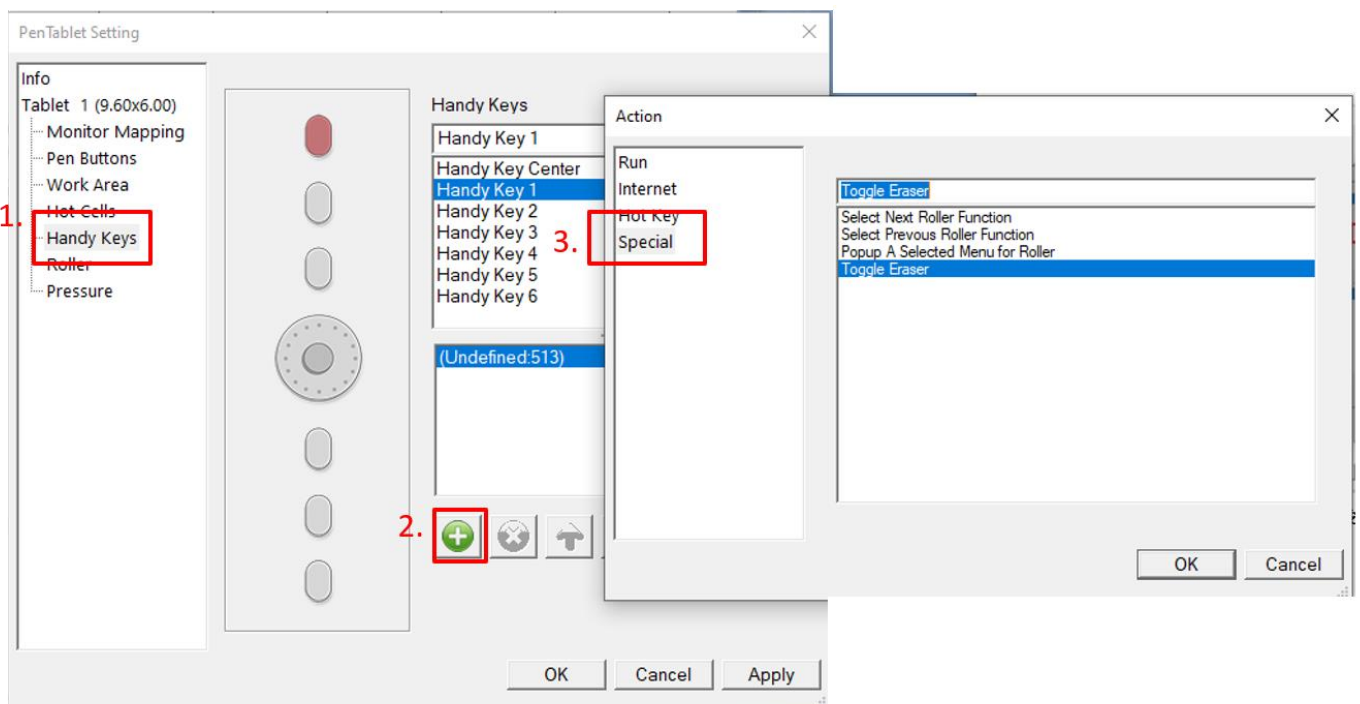
page	usually used in a browser to move to a previously viewed page or the next viewed page.
Page up/page down	Page up key or Page down key on the keyboard.
Arrow left /Arrow right	Left arrow or right arrow on the keyboard.
Undo/ Redo	Simulate pressing Ctrl+G & Ctrl+y
Brush+ / Brush-	Simulate pressing “ { “ and “ } ” on the keyboard.
Layer up/ Layer down	Can shift the layer on the software package.

### 8.3 Selecting a method to choose active Action Pair

If more than one action pair is attached to Roller, only one of these pairs is active at any time. You may change the active pair by defining the center of the Handy Keys to perform this function.

Setting Path: Handy keys >  > Special

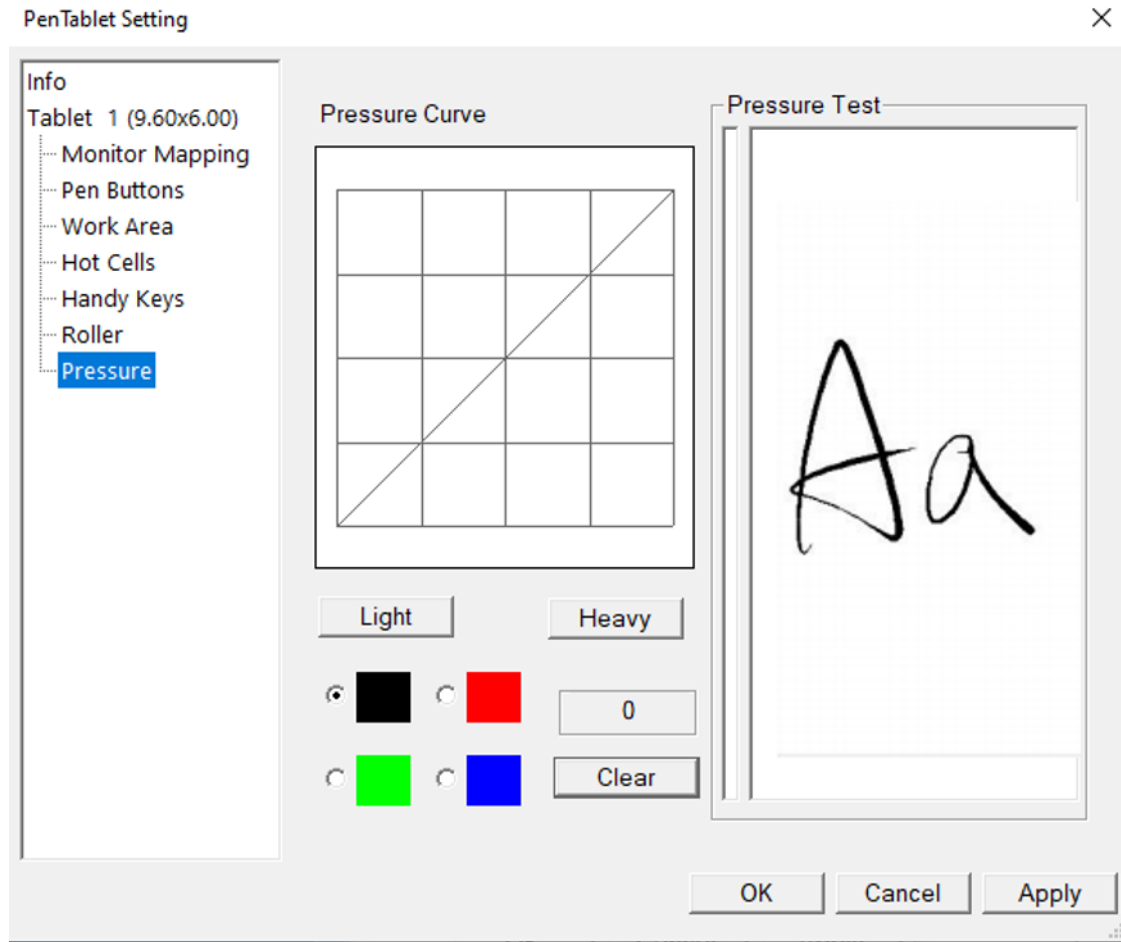
- (1) Select Next Function
- (2) Select Previous Function
- (3) Pop up a Menu to Select
- (4) Toggle Eraser



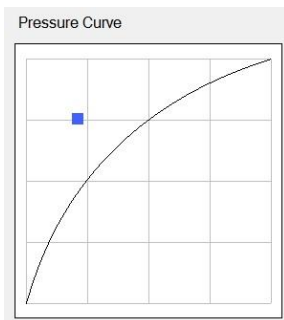
**Diagram 27 Defining Roller**

## 9. Configuring Pressure Sensitivity

When you press Digital Pen against the Tablet in Work Area, the Tablet senses the pressure exerted by Pen Tip and sends the pressure value to the computer. The pressure value has a minimum of 0 and a maximum value to 1024 or 8192 depending on the model of the tablet.



**Diagram 28 Pressure Configuration Panel**



Click the Light or Heavy button to make the tip pressure more lightly or heavily.

Click the area of Pressure Curve, A new control point will add. Move this point to adjusting the pressure curve

To remove the control point, drag it out of the area of Pressure Curve.

Note: If the displayed Pressure Value does not vary as you press Pen Tip, there is either no Pressure Sensitivity function. It means driver Software has not been properly installed.

## Chart 1 Compatible Devices

Asus, Zenfone 3 / Type-C

Asus, Zenfone 4 / Type-C

Asus, Zenpad / Type-C

Asus, Zenpad 3 8" / Type-C

Caterpillar, CAT S60 / Type-C

Google, Pixel 3 / Type-C

Huawei, Honor 8X / microUSB

Huawei, P10 / Type-C

Huawei, P20 / Type-C

Huawei, P30 / Type-C

Huawei, MediaPad M5 Lite /microUSB

Huawei, Mate 10 Pro / Type-C

Huawei, Mate 20 Pro UD / Type-C

Huawei, Nova 4 / Type-C

LG, G6 / Type-C

LG, Nexus 5X / Type-C

NEC, LAVIE / Type-C

Nokia, 7 Plus / Type-C

Nokia, 8.1 / Type-C

Nokia, 9 Pure View / Type-C

Oneplus, Oneplus 6 / Type-C

Oppo A5 / Type-C /microUSB

Samsung, Galaxy Note 10 / Type-C

Samsung, Galaxy Note 10+ / Type-C

Samsung, Galaxy Note 8 / Type-C

Samsung, Galaxy Note 9 / Type-C

Samsung, Galaxy Tab S3 / Type-C

Samsung, Galaxy Tab S4 / Type-C

Samsung, Galaxy S10+ / Type-C

SHARP, Aquos Sense plus / Type-C

Sony, Xperia X / microUSB

Sony, Xperia XZ2 / Type-C

Vivo, Y93 / microUSB

Xiaomi, Mi 6 / Type-C

Xiaomi, Mi9T Pro / Type-C

Xiaomi, Redmi Note 7 / Type-C

Xiaomi, 5X / Type-C